

# JONES - PARCEL "D-3"

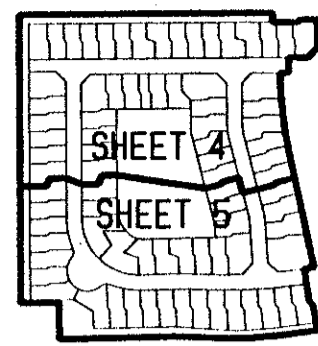
0683-008

6

A PORTION OF JONES P.U.D., BEING A REPLAT OF TRACT "F-2", JONES - PARCEL "D-2" AS RECORDED IN PLAT BOOK 82, PAGES 105 THROUGH 111 OF THE PUBLIC RECORDS OF PALM BEACH COUNTY, FLORIDA, SITUATE IN SECTION 33, TOWNSHIP 45 SOUTH, RANGE 42 EAST, PALM BEACH COUNTY, FLORIDA

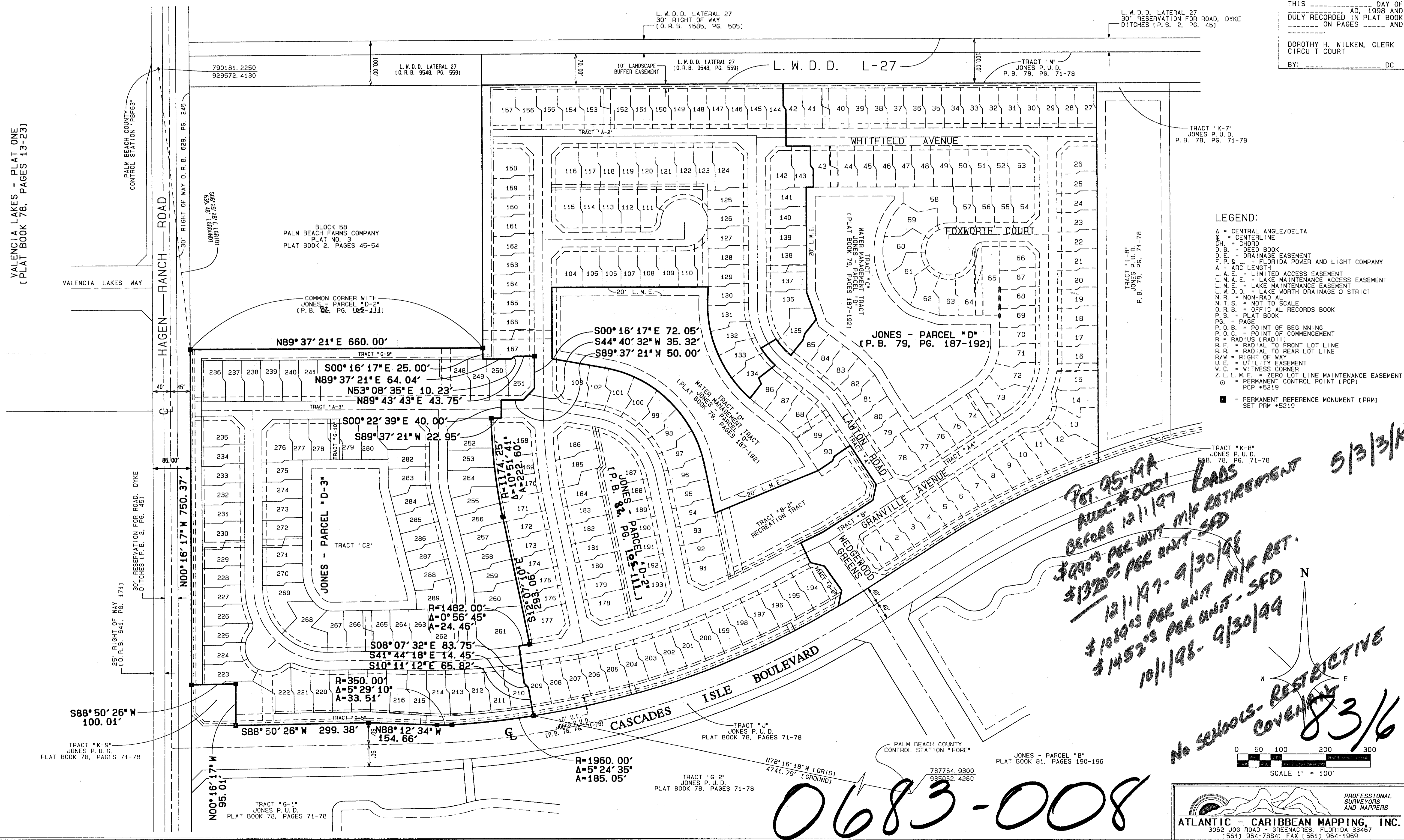
SHEET 3 OF 5

APRIL 1998



KEY MAP NOT TO SCALE

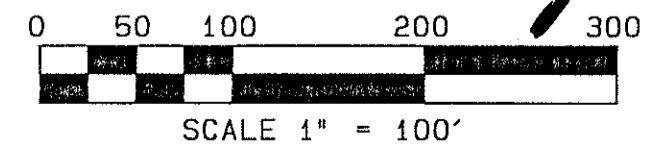
STATE OF FLORIDA } SS  
 COUNTY OF PALM BEACH }  
 THIS PLAT WAS FILED FOR RECORD AT \_\_\_\_\_ DAY OF \_\_\_\_\_ AD, 1998 AND DULY RECORDED IN PLAT BOOK \_\_\_\_\_ ON PAGES \_\_\_\_\_ AND \_\_\_\_\_  
 DOROTHY H. WILKEN, CLERK CIRCUIT COURT  
 BY: \_\_\_\_\_ DC



- LEGEND:**
- Δ = CENTRAL ANGLE/DELTA
  - C = CENTERLINE
  - CH = CHORD
  - D.B. = DEED BOOK
  - D.E. = DRAINAGE EASEMENT
  - F.P. & L. = FLORIDA POWER AND LIGHT COMPANY
  - A = ARC LENGTH
  - L.A.E. = LIMITED ACCESS EASEMENT
  - L.M.A.E. = LAKE MAINTENANCE ACCESS EASEMENT
  - L.M.E. = LAKE MAINTENANCE EASEMENT
  - L.W.D. = LAKE WORTH DRAINAGE DISTRICT
  - N.R. = NON-RADIAL
  - N.T.S. = NOT TO SCALE
  - O.R.B. = OFFICIAL RECORDS BOOK
  - P.B. = PLAT BOOK
  - P.G. = PAGE
  - P.O.B. = POINT OF BEGINNING
  - P.O.C. = POINT OF COMMENCEMENT
  - R = RADIUS (RADII)
  - R.F. = RADIAL TO FRONT LOT LINE
  - R.L. = RADIAL TO REAR LOT LINE
  - R.W. = RIGHT OF WAY
  - U.E. = UTILITY EASEMENT
  - W.C. = WITNESS CORNER
  - Z.L.L.M.E. = ZERO LOT LINE MAINTENANCE EASEMENT
  - ⊙ = PERMANENT CONTROL POINT (PCP)
  - PCP #5219
  - = PERMANENT REFERENCE MONUMENT (PRM)
  - SET PRM #5219

*Handwritten notes:*  
 PET. 95-19A  
 AUD. #0001  
 BEFORE 12/1/97 LOADS  
 \$990.00 PER UNIT MIF RETIREMENT  
 \$1320.00 PER UNIT SFD  
 12/1/97 - 9/30/98  
 \$1089.00 PER UNIT MIF RET.  
 \$1452.00 PER UNIT - SFD  
 10/1/98 - 9/30/99

*Handwritten notes:*  
 No schools - RESTRICTIVE COVENANT  
 8 3/4



0683-008

SUBMISSION # Jones Parcel D-3  
 BOOK 83 PAGE 6  
 FLOOD ZONE A+ FLOOD MAP # 2001  
 ZONING PDD  
 TRAC # 50  
 SE 95-19  
 ZIP CODE 33448  
 PUD NAME Amherst PUD

ATLANTIC - CARIBBEAN MAPPING, INC.  
 3062 JOG ROAD - GREENACRES, FLORIDA 33467  
 (561) 964-7884; FAX (561) 964-1969